



SECURELINX SERIES 5 INTEGRATED ACCESS POINT (IAP) SHORT RANGE (SR) 5.1-5.9 ACCESS POINT/CLIENT

SECURELINX DELIVERS CARRIER-CLASS RELIABILITY, AN ADVANCED FEATURE SET, EASE OF INSTALLATION AND LOWER TOTAL COST OF OWNERSHIP

SERIES 5 INTEGRATED ACCESS POINT

SECURELINX™ PRODUCT ADVANTAGE

The SECURELINX™ product line is an intelligent fixed wireless Point-to-Point (PtP) and Point-to-MultiPoint (PtMP) network infrastructure product line that is simple to design, deploy and support. With an advanced feature set and unmatched capabilities, customers now have a predictable and cost effective method of protecting their property and assets.

INTEGRATED DESIGN

The IAP is a completely assembled system. The integrated antenna and enclosure design securely houses and protects the radio and electronics from extreme weather conditions, and PoE power surges, while minimizing external EMI and RFI interference. Available as a “Pair” or individually, each system includes all the components necessary for a quick, successful installation.

COST EFFECTIVE SOLUTION

The Short Range (SR) product is designed for shorter distances (up to 2 miles) and less complex networks. This product adheres to budget restraints without sacrificing quality or performance. The SR product utilizes the same operating system, network management software and hardware processor platform as the traditional SECURELINX™ product line.

FAST AND EASY TO DEPLOY

The SR product line is focused on enabling a wireless network to be deployed quickly and cost-effectively. Many aspects of the product have been designed to minimize field installation time and ongoing maintenance.

QUALITY OF SERVICE (QoS)

SECURELINX™ supports the 802.11e based traffic prioritization method for video and voice, which are delay sensitive services. Additionally, advanced traffic policies can be implemented by interface, MAC, source and protocol.

RELIABLE CONNECTIONS

The SECURELINX™ platform is a proven and reliable product that securely handles concurrent video, voice and data applications. With flexible channel widths of 5MHz, 10MHz and 20MHz, this greatly reduces the challenges of interference with competing networks.

SECURITY

SECURELINX™ incorporates significant security measures for the privacy of your data. They feature WEP 64/128, WPA1, WPA2 and ACL encryption between nodes. SECURELINX™ nodes also support VLANs enabling the same physical infrastructure to have segmented traffic with secure access control. MAC and IP level authentication is also supported.

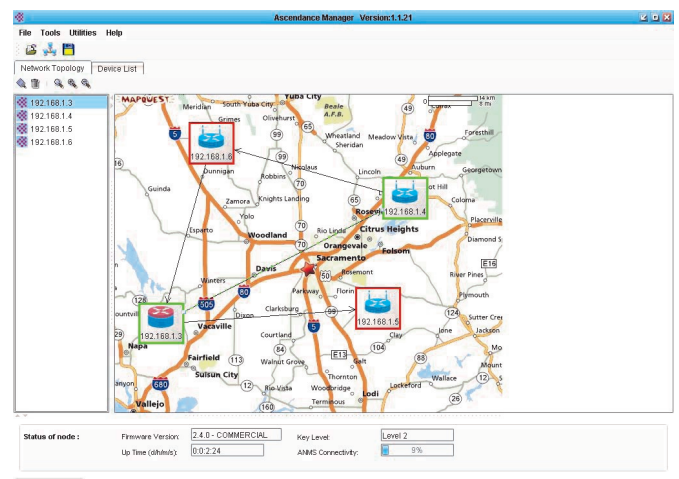
HIGHLIGHTS

- QUICKLY CONFIGURED AND DEPLOYED
- UP TO 40MBPS TCP/IP DATA THROUGHPUT
- EXTREMELY COST EFFECTIVE
- UP TO 2 MILES DISTANCE
- WORLD-CLASS NETWORK MANAGEMENT S/W
- QOS ENABLED PRIORITIZATION FOR VIDEO & VOICE
- AVAILABLE SINGLE OR PRE-CONFIGURED PAIR
- PTP OR PTMP NETWORK SUPPORT

ADVANCED NETWORK MANAGEMENT

The Ascendance Network Management Software (ANMS) application is a world-class management tool to perform modifications to the system configuration. Additionally, the administrator can monitor and analyze network health, review operating status and view important real-time statistical information.

Each customers’ network can be saved as a unique profile allowing for the administrator to quickly load site specific information and display the network topology on a custom map or background image. This allows the administrator to view a single network or many networks all from the same interface.



SecureLINX Series 5 SR IAP Specifications

RADIO PARAMETERS

Frequency of Operation	802.11a: 5.15~5.875 GHz		
Channel Spacing	5MHz, 10MHz and 20MHz		
Data Rates	6, 9, 12, 18, 24, 36, 48, and 54Mbps. 108Mbps in Super A mode		
RF Power Output	+20dBm		
Receive Sensitivity	6 Mbps 20 dBm +1 /-1.5 dB -88 dBm +/-1.5 dB	9 Mbps 20 dBm +1 /-1.5 dB -92 dBm +/-1.5 dB	
	12 Mbps 20 dBm +1 /-1.5 dB -90 dBm +/-1.5 dB	18 Mbps 20 dBm +1 /-1.5 dB -89 dBm +/-1.5 dB	
	24 Mbps 17 dBm +1 /-1.5 dB -85 dBm +/-1.5 dB	36 Mbps 17 dBm +1 /-1.5 dB -82 dBm +/-1.5 dB	
	48 Mbps 17 dBm +1 /-1.5 dB -76 dBm +/-1.5 dB	54 Mbps 17 dBm +1 /-1.5 dB -73 dBm +/-1.5 dB	

ANTENNA PARAMETERS

Antenna Type	Integrated panel - 3dB Beamwidth Vertical/Horizontal 14deg/11deg
Gain	+20dBi
Polarization	Single Linear, Vertical

DATA AND OPERATIONAL PARAMETERS

Operational modes	Access Point, WDS, Repeater, Client, Station, and Transparent Bridging Support
Mode	802.11a and Turbo A
Configuration & Management	Proprietary Network Management Software (ANMS)
QoS Bandwidth Management:	WMM 802.11e, Committed Information Rate (CIR), Peak Information Rate (PIR), Committed Burst Size (CBS), Excess Burst Size (EBS), Input/Output Interface, Source IP/Subnet, Source Port(s), Source MAC, Destination IP/Subnet, Destination IP/Subnet, Destination Port(s), Destination MAC, Protocol, Application, FTP, ICMP, TCP, Peer to Peer, EDonkey, Kazza, IRC
Wireless Tuning	TX Power, TX Rate, Antenna Selection and ACK Timeout, Alignment
Wireless Extras	VAP's/Multiple SSID's, Super A, WMM-Wireless QoS, MAC Spoofing, Hide SSID, Best Channel Selection, Country Code Selection, DTS/TPC Full Support, Repeater-WPA1/2
Range (LOS)	Up to 2 Miles
Data Throughput	Up to 40MBPS

NETWORKING FEATURES

Bridging	Layer 2, MAC forwarding
Routing	Layer 3 IP address forwarding, Static Routing, Dynamic Routing (RIP)
PPPoE-PPTP	PPPoE Client, PPTP Client
Services	SNMP, NTP, HTTP Server, SSH
DHCP	DHCP Server, Client and Relay
Monitor Utilities	Ping and Trace Route Utilities, and Antenna alignment tool, real-time statistics, association list, site survey
802.1Q	VLAN (802.1Q) Support
Firewall-NAT	Input/Output Interface, Source IP/Subnet, Port(s), Source MAC, Destination IP/Subnet, Protocol, Connection State

SECURITY

Modes	WEP 64/128, WPA1, WPA2 and ACL
Association List	Alias per Station, Idle Time, IP Address, Link Parameters, Command Set, Signal, Noise, Fade Margin, TX Rate, Remove, Disassociate and Deny

PHYSICAL

Network Interface	10/100 Base-T Ethernet (RJ45) port (1 port)
Dimensions	11.12" x 4.05" x 10.49"
Weight	3.9 lbs.
Packaging	Outdoor, all-weather enclosure IP-65
Mounting	Mounting bracket for 1'-2" pole or wall

ENVIRONMENT

Temperature Range	0-70 °C
Humidity	0 to 95%, non-condensing at 50°C
Regulatory Certifications	FCC Part 15, CE, UL, CSA, RoHS/WECE
Standard Compliance	WECA (Wi-Fi & Wi-Fi5 compliance), IEEE802.11a, RoHS

POWER

Power Method	Power over Ethernet (PoE) or optional Solar
Power Supply	120VAC/18VDC
DC Power Input	9-18VDC
Power Connector	PoE 10/100 Base-T Ethernet (RJ45) port
Power Consumption	10W
PoE Cat5 Max Cable Length	100 meters on 24 AWG STP Cat5 Cable



ONE YEAR PARTS & LABOR WARRANTY

SL-DS-S5-SR Rev: 5102011



AUBURN, CA USA 95602 TEL: +1 (530) 887-8300 TOLL FREE: (888) 415-9633 FAX : +1 (530) 889.1255
www.ascendancewireless.com sales@ascendancewireless.com support@ascendancewireless.com

The information presented herein is to the best of our knowledge true and accurate. No warranty or guarantee expressed or implied is made regarding the capacity, performance or suitability of any product. Product specifications subject to change without notice.