

Cam 1

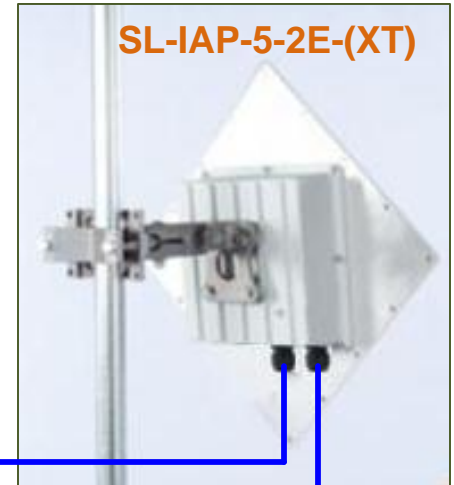


Cam 2

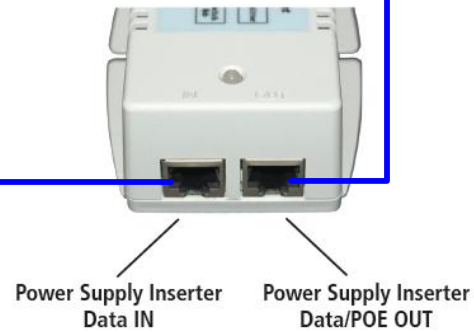


- PoE 48VDC delivered to IP Camera
- 1 PoE Switch port
- 40 Watts max
- Cat5e cable 300'/100m max length
- Shielded and UV rated cable recommended
- Mounting hardware included
- (1) PoE injector included

SL-IAP-5-2E-(XT)



PoE Injector  
(SL-POE-HP-50i)



Included



Power Supply Inserter AC Power IN  
(90-264VAC)@120V/230

Optional

PoE Injector  
(SL-POE-HP-50i)

Power Supply Inserter AC Power IN  
(90-264VAC)@120V/230

Power Supply Inserter  
Data IN

Power Supply Inserter  
Data/POE OUT

To Commercial Power