

SECURELINX SERIES 2 INTEGRATED ACCESS POINT (IAP) 2.4GHZ ACCESS POINT/BACK HAUL/CLIENT

ASCENDANCE WIRELESS'S SECURELINX DELIVERS CARRIER-CLASS FEATURES, EASE OF INSTALLATION AND LOWER COST OF OWNERSHIP

SERIES 2 INTEGRATED ACCESS POINT

SECURELINX™ PRODUCT ADVANTAGE

The SECURELINX™ product line is an intelligent fixed wireless Point-to-Point (PtP) and Point-to-MultiPoint (PtMP) network infrastructure product line that is simple to design, deploy and support. With an advanced feature set and unmatched capabilities, customers now have a predictable and cost effective method of protecting their property and assets.

INTEGRATED DESIGN

The IAP is a completely assembled system. The integrated antenna and enclosure design securely houses and protects the radio and electronics from extreme weather conditions, and PoE power surges, while minimizing external EMI and RFI interference. Available as a "Pair" or individually, each system includes all the components necessary for a quick, successful installation.

POE/BUILT-IN HARDENED POE SWITCH

Each system is powered by the included PoE Power Supply/Injector or by an optional Solar Power system. Systems can be configured with 1, 2 or 5 Ethernet ports. Included on the 2 or 5 port systems is a built-in Hardened PoE Switch. The Switch allows PoE cameras or other PoE devices to be directly connected and powered by the system without the cost of an additional PoE Switch offering significant installation time and cost savings.

FLEXIBLE CONFIGURATIONS - MULTIPLE RADIO SUPPORT

SECURELINX™ integrated systems offer the flexibility to add a second radio. The second radio can be configured in the same spectrum or in any other spectrum the SECURELINX™ IAP product line supports. An N-Female connector is provided for an external antenna connection. This provides the flexibility to match the proper gain and frequency antenna to the environment.

QUALITY OF SERVICE (QoS)

SECURELINX™ supports the 802.11e based traffic prioritization method for video and voice, which are delay sensitive services. Additionally, advanced traffic policies can be implemented by interface, MAC, source and protocol.

RELIABLE CONNECTIONS

The SECURELINX™ platform is a proven and reliable product that securely handles concurrent video, voice and data applications. With flexible channel widths of 5MHz, 10MHz and 20MHz, this greatly reduces the challenges of interference with competing networks.

SECURITY

SECURELINX™ incorporates significant security measures for the privacy of your data. They feature WEP 64/128, WPA1, WPA2 and ACL encryption between nodes. SECURELINX™ nodes also support VLANs enabling the same physical infrastructure to have segmented traffic with secure access control. MAC and IP level authentication is also supported.

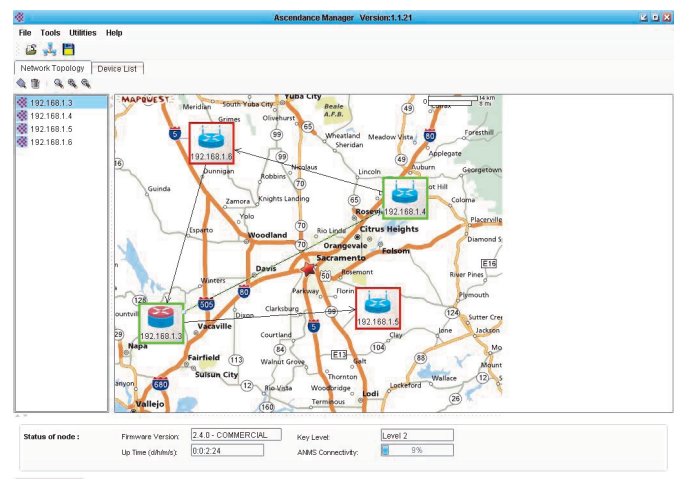
HIGHLIGHTS

- QUICKLY CONFIGURED AND DEPLOYED
- UP TO 40MBPS TCP/IP DATA THROUGHPUT
- SUPPORTS UP TO 2 RADIO LINKS
- UP TO 5 IP DEVICES DIRECTLY CONNECTED
- WORLD-CLASS NETWORK MANAGEMENT SOFTWARE
- BUILT-IN HARDENED POE SWITCH
- INDOOR AND OUTDOOR PRODUCTS
- QOS ENABLED PRIORITIZATION FOR VIDEO & VOICE

ADVANCED NETWORK MANAGEMENT

The Ascendance Network Management Software (ANMS) application is a world-class management tool to perform modifications to the system configuration. Additionally, the administrator can monitor and analyze network health, review operating status and view important real-time statistical information.

Each customers' network can be saved as a unique profile allowing for the administrator to quickly load site specific information and display the network topology on a custom map or background image. This allows the administrator to view a single network or many networks all from the same interface.



SecureLINX Series 2 IAP Specifications

RADIO PARAMETERS

Frequency of Operation	802.11b/g: 2.412~2.472GHz		
Channel Spacing	5MHz, 10MHz and 20MHz		
Data Rates	6, 9, 12, 18, 24, 36, 48, and 54Mbps (11g) 108Mbps (Super G) 1, 2, 5.5, and 11Mbps (11b)		
RF Power Output	+29dBm 802.11b +28dBm 802.11g		
Receive Sensitivity	6 Mbps 27 dBm +1 /-1.5 dB -94 dBm +/-1.5 dB	9 Mbps 27 dBm +1 /-1.5 dB -93 dBm +/-1.5 dB	
	12 Mbps 27 dBm +1 /-1.5 dB -92 dBm +/-1.5 dB	18 Mbps 27 dBm +1 /-1.5 dB -91 dBm +/-1.5 dB	
	24 Mbps 27 dBm +1 /-1.5 dB -87 dBm +/-1.5 dB	36 Mbps 25 dBm +1 /-1.5 dB -84 dBm +/-1.5 dB	
	48 Mbps 24 dBm +1 /-1.5 dB -76 dBm +/-1.5 dB	54 Mbps 23 dBm +1 /-1.5 dB -73 dBm +/-1.5 dB	

ANTENNA PARAMETERS

Antenna Type	Integrated panel - 3dB Beamwidth Vertical/Horizontal 18deg/18deg
Gain	+19dBi
Polarization	Vertical or Horizontal

DATA AND OPERATIONAL PARAMETERS

Operational modes	Access Point, WDS, Repeater, Client, Station, and Transparent Bridging Support
Mode	802.11b/g and Super G
Configuration & Management	Proprietary Network Management Software (ANMS)
QoS Bandwidth Management:	WMM 802.11e, Committed Information Rate (CIR), Peak Information Rate (PIR), Committed Burst Size (CBS), Excess Burst Size (EBS), Input/Output Interface, Source IP/Subnet, Source Port(s), Source MAC, Destination IP/Subnet, Destination IP/Subnet, Destination Port(s), Destination MAC, Protocol, Application, FTP, ICMP, TCP, Peer to Peer, EDonkey, Kazza, IRC
Wireless Tuning	TX Power, TX Rate, Antenna Selection and ACK Timeout, Alignment
Wireless Extras	VAP's/Multiple SSID's, Super A, WMM-Wireless QoS, MAC Spoofing, Hide SSID, Best Channel Selection, Country Code Selection, DTS/TPC Full Support, Repeater-WPA1/2
Range (LOS)	Up to 15 Miles
Data Throughput	Up to 40MBPS

NETWORKING FEATURES

Bridging	Layer 2, MAC forwarding
Routing	Layer 3 IP address forwarding, Static Routing, Dynamic Routing (RIP)
PPPoE-PPTP	PPPoE Client, PPTP Client
Services	SNMP, NTP, HTTP Server, SSH
DHCP	DHCP Server, Client and Relay
Monitor Utilities	Ping and Trace Route Utilities, and Antenna alignment tool, real-time statistics, association list, site survey
802.1Q	VLAN (802.1Q) Support
Firewall-NAT	Input/Output Interface, Source IP/Subnet, Port(s), Source MAC, Destination IP/Subnet, Protocol, Connection State

SECURITY

Modes	WEP 64/128, WPA1, WPA2 and ACL
Association List	Alias per Station, Idle Time, IP Address, Link Parameters, Command Set, Signal, Noise, Fade Margin, TX Rate, Remove, Disassociate and Deny

PHYSICAL

Network Interface	Weatherized 10/100 Base-T Ethernet (RJ45) ports (1, 2 or 5 ports)
Dimensions	15.4" x 15.4" x 4.87"
Weight	8.7 lbs
Packaging	Outdoor, all-weather enclosure
Mounting	Articulating Mounting bracket for 1'-3" pole or wall

ENVIRONMENT

Temperature Range	1 and 2 Ethernet systems 0-70 °C - 5 Ethernet system -40-85°C
Humidity	0 to 95%, non-condensing at 50°C
Regulatory Certifications	FCC Part 15, CE, UL, CSA, RoHS/WEEE
Standard Compliance	WECA (Wi-Fi & Wi-Fi5 compliance), IEEE802.11a, RoHS

POWER

Power Method	Power over Ethernet (PoE)
Power Supply	1 Ethernet system 120VAC/18VDC - 2 or 5 Ethernet systems 120VAC/50VDC
DC Power Input	1 Ethernet system 9-18VDC - 2 or 5 Ethernet systems 9-50VDC
Power Connector	Weatherized 10/100 Base-T Ethernet (RJ45) port
Power Consumption	10-14W
Built-in Hardened PoE Switch	Included on 2 or 5 Ethernet port systems (Up to 40W of available power)
PoE Cat5 Max Cable Length	100 meters on 24 AWG STP Cat5 Cable



ONE YEAR PARTS & LABOR WARRANTY

SL-DS-S2 Rev: 52210



AUBURN, CA USA 95602 TEL: +1 (530) 887-8300 TOLL FREE: (888) 415-9633 FAX : +1 (530) 889.1255
www.ascendancewireless.com sales@ascendancewireless.com support@ascendancewireless.com

The information presented herein is to the best of our knowledge true and accurate. No warranty or guarantee expressed or implied is made regarding the capacity, performance or suitability of any product. Product specifications subject to change without notice.