

SECURELINX SR SERIES 5 INTEGRATED ACCESS POINT (IAP) 5.1-5.9 GHZ ACCESS POINT/CLIENT

SECURELINX DELIVERS CARRIER-CLASS RELIABILITY, AN ADVANCED FEATURE SET, EASE OF INSTALLATION AND LOWER TOTAL COST OF OWNERSHIP

SR SERIES 5 INTEGRATED ACCESS POINT

SECURELINX™ PRODUCT ADVANTAGE

The SECURELINX™ product line is an intelligent fixed wireless Point-to-Point (PtP) and Point-to-MultiPoint (PtMP) network infrastructure product line that is simple to design, deploy and support. With an advanced feature set and unmatched capabilities, customers now have a predictable and cost effective method of protecting their property and assets.

INTEGRATED DESIGN

The IAP is a completely assembled system. The integrated antenna and enclosure design securely houses and protects the radio and electronics from extreme weather conditions, and PoE power surges, while minimizing external EMI and RFI interference. Available as a “Pair” or individually, each system includes all the components necessary for a quick, successful installation.

COST EFFECTIVE SOLUTION

The Short Range (SR) product is designed for shorter distances (up to 2 miles) and less complex networks. This product adheres to budget restraints without sacrificing quality or performance. The SR product utilizes the same operating system, network management software and hardware processor platform as the traditional SECURELINX™ product line.

FAST AND EASY TO DEPLOY

The SR product line is focused on enabling a wireless network to be deployed quickly and cost-effectively. Many aspects of the product have been designed to minimize field installation time and ongoing maintenance.

QUALITY OF SERVICE (QoS)

SECURELINX™ supports the 802.11e based traffic prioritization method for video and voice, which are delay sensitive services. Additionally, advanced traffic policies can be implemented by interface, MAC, source and protocol.

RELIABLE CONNECTIONS

The SECURELINX™ platform is a proven and reliable product that securely handles concurrent video, voice and data applications. With flexible channel widths of 5MHz, 10MHz and 20MHz, this greatly reduces the challenges of interference with competing networks.

SECURITY

SECURELINX™ incorporates significant security measures for the privacy of your data. They feature WEP 64/128, WPA1, WPA2 and ACL encryption between nodes. SECURELINX™ nodes also support VLANs enabling the same physical infrastructure to have segmented traffic with secure access control. MAC and IP level authentication is also supported.

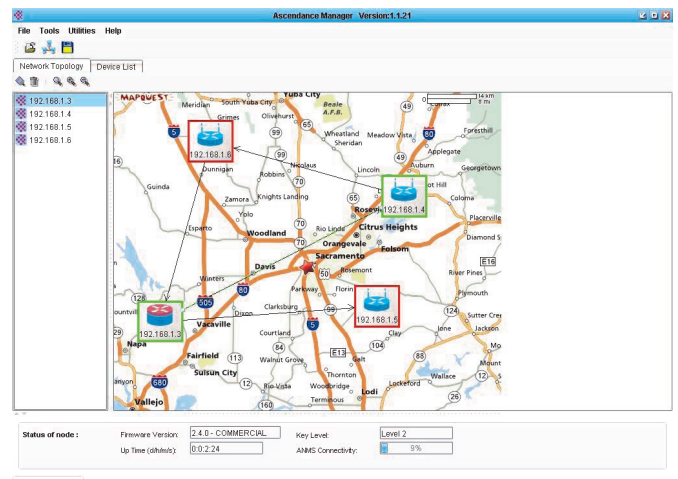
HIGHLIGHTS

- QUICKLY CONFIGURED AND DEPLOYED
- UP TO 40MBPS TCP/IP DATA THROUGHPUT
- EXTREMELY COST EFFECTIVE
- UP TO 2 MILES DISTANCE
- WORLD-CLASS NETWORK MANAGEMENT S/W
- QOS ENABLED PRIORITIZATION FOR VIDEO & VOICE
- AVAILABLE SINGLE OR PRE-CONFIGURED PAIR
- PTP OR PTMP NETWORK SUPPORT

ADVANCED NETWORK MANAGEMENT

The Ascendance Network Management Software (ANMS) application is a world-class management tool to perform modifications to the system configuration. Additionally, the administrator can monitor and analyze network health, review operating status and view important real-time statistical information.

Each customers’ network can be saved as a unique profile allowing for the administrator to quickly load site specific information and display the network topology on a custom map or background image. This allows the administrator to view a single network or many networks all from the same interface.



SecureLINX SR Series 5 IAP Specifications

RADIO PARAMETERS

| | | | |
|------------------------|---|--|--|
| Frequency of Operation | 802.11a: 5.15~5.875 GHz | | |
| Channel Spacing | 5MHz, 10MHz and 20MHz | | |
| Data Rates | 6, 9, 12, 18, 24, 36, 48, and 54Mbps. 108Mbps in Super A mode | | |
| RF Power Output | +20dBm | | |
| Receive Sensitivity | 6 Mbps 20 dBm +1 /-1.5 dB -88 dBm +/-1.5 dB | 9 Mbps 20 dBm +1 /-1.5 dB -92 dBm +/-1.5 dB | |
| | 12 Mbps 20 dBm +1 /-1.5 dB -90 dBm +/-1.5 dB | 18 Mbps 20 dBm +1 /-1.5 dB -89 dBm +/-1.5 dB | |
| | 24 Mbps 17 dBm +1 /-1.5 dB -85 dBm +/-1.5 dB | 36 Mbps 17 dBm +1 /-1.5 dB -82 dBm +/-1.5 dB | |
| | 48 Mbps 17 dBm +1 /-1.5 dB -76 dBm +/-1.5 dB | 54 Mbps 17 dBm +1 /-1.5 dB -73 dBm +/-1.5 dB | |

ANTENNA PARAMETERS

| | |
|--------------|--|
| Antenna Type | Integrated panel - 3dB Beamwidth Vertical/Horizontal 14deg/11deg |
| Gain | +20dBi |
| Polarization | Single Linear, Vertical or Horizontal |

DATA AND OPERATIONAL PARAMETERS

| | |
|----------------------------|---|
| Operational modes | Access Point, WDS, Repeater, Client, Station, and Transparent Bridging Support |
| Mode | 802.11a and Turbo A |
| Configuration & Management | Proprietary Network Management Software (ANMS) |
| QoS Bandwidth Management: | WMM 802.11e, Committed Information Rate (CIR), Peak Information Rate (PIR), Committed Burst Size (CBS), Excess Burst Size (EBS), Input/Output Interface, Source IP/Subnet, Source Port(s), Source MAC, Destination IP/Subnet, Destination IP/Subnet, Destination Port(s), Destination MAC, Protocol, Application, FTP, ICMP, TCP, Peer to Peer, EDonkey, Kazza, IRC |
| Wireless Tuning | TX Power, TX Rate, Antenna Selection and ACK Timeout, Alignment |
| Wireless Extras | VAP's/Multiple SSID's, Super A, WMM-Wireless QoS, MAC Spoofing, Hide SSID, Best Channel Selection, Country Code Selection, DTS/TPC Full Support, Repeater-WPA1/2 |
| Range (LOS) | Up to 2 Miles |
| Data Throughput | Up to 40MBPS - Multiple links can be combined in increase capacity |

NETWORKING FEATURES

| | |
|-------------------|--|
| Bridging | Layer 2, MAC forwarding |
| Routing | Layer 3 IP address forwarding, Static Routing, Dynamic Routing (RIP) |
| PPPoE-PPTP | PPPoE Client, PPTP Client |
| Services | SNMP, NTP, HTTP Server, SSH |
| DHCP | DHCP Server, Client and Relay |
| Monitor Utilities | Ping and Trace Route Utilities, and Antenna alignment tool, real-time statistics, association list, site survey |
| 802.1Q | VLAN (802.1Q) Support |
| Firewall-NAT | Input/Output Interface, Source IP/Subnet, Port(s), Source MAC, Destination IP/Subnet, Protocol, Connection State |

SECURITY

| | |
|------------------|--|
| Modes | WEP 64/128, WPA1, WPA2 and ACL |
| Association List | Alias per Station, Idle Time, IP Address, Link Parameters, Command Set, Signal, Noise, Fade Margin, TX Rate, Remove, Disassociate and Deny |

PHYSICAL

| | |
|-------------------|---|
| Network Interface | 10/100 Base-T Ethernet (RJ45) port (1 port) |
| Dimensions | 10.4" x 10.4" x 3.6" |
| Weight | 3.43 lbs. |
| Packaging | Outdoor, all-weather enclosure |
| Mounting | Mounting bracket for 1'-2" pole |

ENVIRONMENT

| | |
|---------------------------|---|
| Temperature Range | -40°C to 85°C |
| Humidity | 0 to 95%, non-condensing at 50°C |
| Regulatory Certifications | FCC Part 15, CE, UL, CSA, RoHS/WEEE |
| Standard Compliance | WECA (Wi-Fi & Wi-Fi5 compliance), IEEE802.11a, RoHS |

POWER

| | |
|---------------------------|---|
| Power Method | Power over Ethernet (PoE) or optional Solar |
| Power Supply | 120VAC/18VDC |
| DC Power Input | 9-18VDC |
| Power Connector | PoE 10/100 Base-T Ethernet (RJ45) port |
| Power Consumption | 10W |
| PoE Cat5 Max Cable Length | 100 meters on 24 AWG STP Cat5 Cable |



ONE YEAR PARTS & LABOR WARRANTY

SL-DS-S5-SR R:42613



AUBURN, CA USA 95602 TEL: +1 (530) 887-8300 TOLL FREE: (888) 415-9633 FAX : +1 (530) 889.1255
www.ascendancewireless.com sales@ascendancewireless.com support@ascendancewireless.com

The information presented herein is to the best of our knowledge true and accurate. No warranty or guarantee expressed or implied is made regarding the capacity, performance or suitability of any product. Product specifications subject to change without notice.